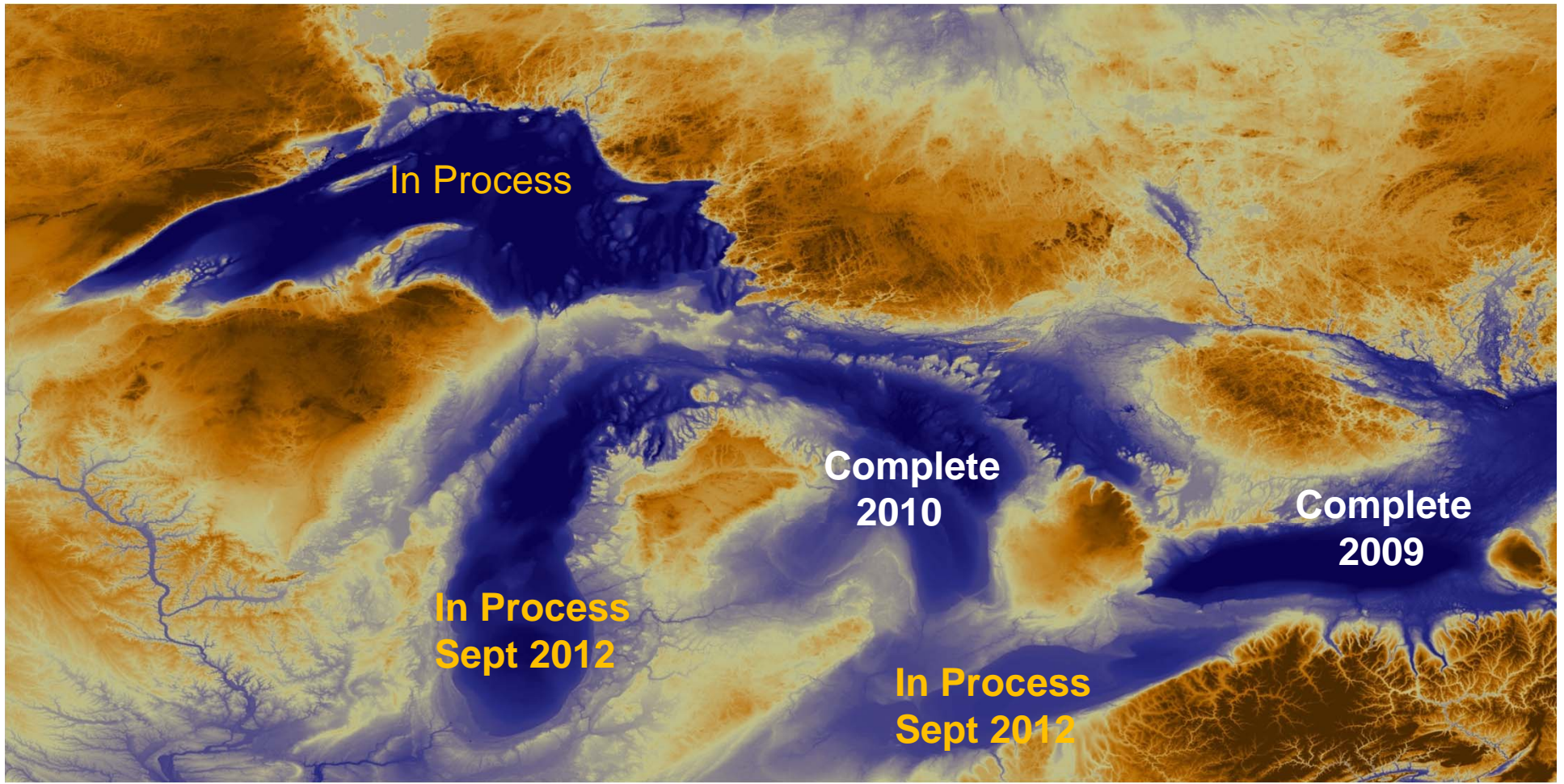


Conservation Action Planning (CAP):

Application to Large Scale Conservation and Restoration

Doug Pearsall
The Nature Conservancy
Huron - Erie Corridor Initiative Meeting
March 14, 2012

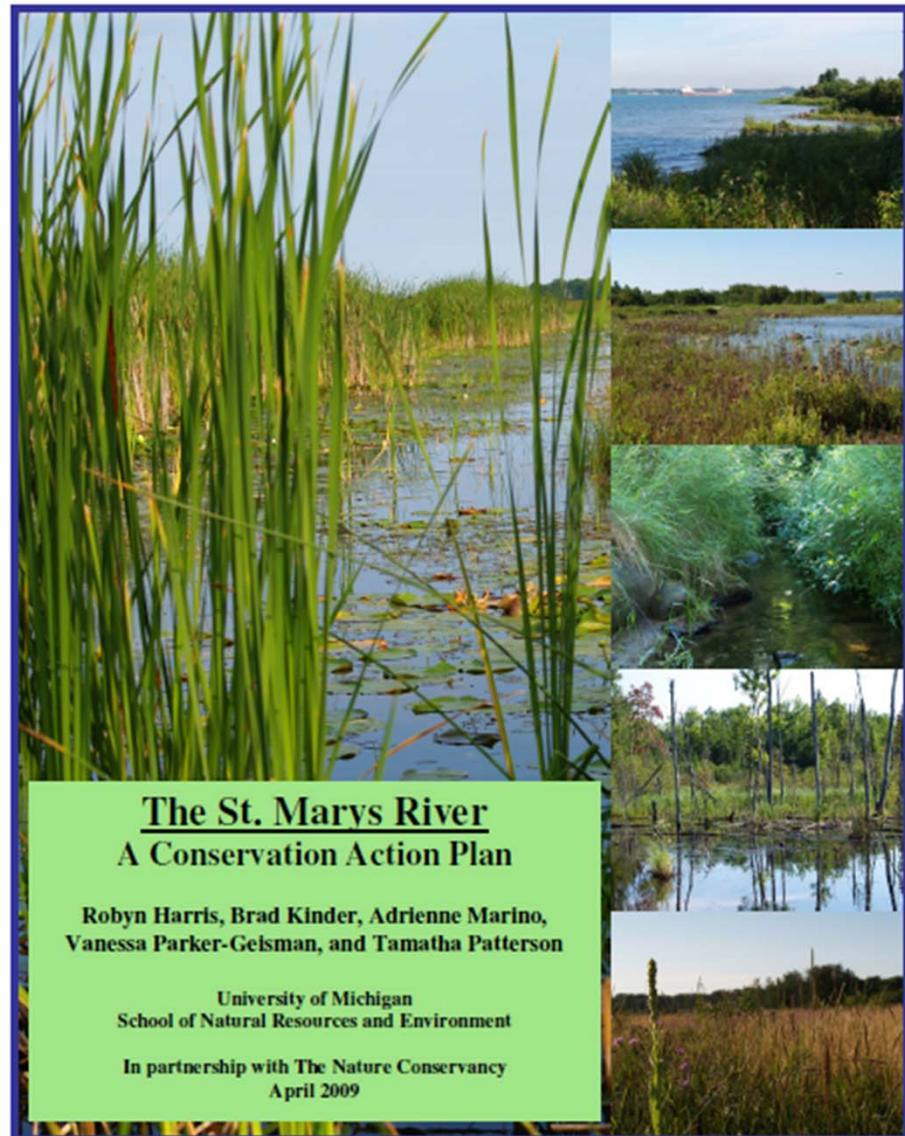
CAP Application at Large Scales Lake Basin “Blueprints”



CAP Application at Large Scales

St. Marys River

- TNC priority area
- High biodiversity value
- Multiple threats
- International policy and management challenges
- Local partners (US and CAN) with interest in pursuing conservation strategies



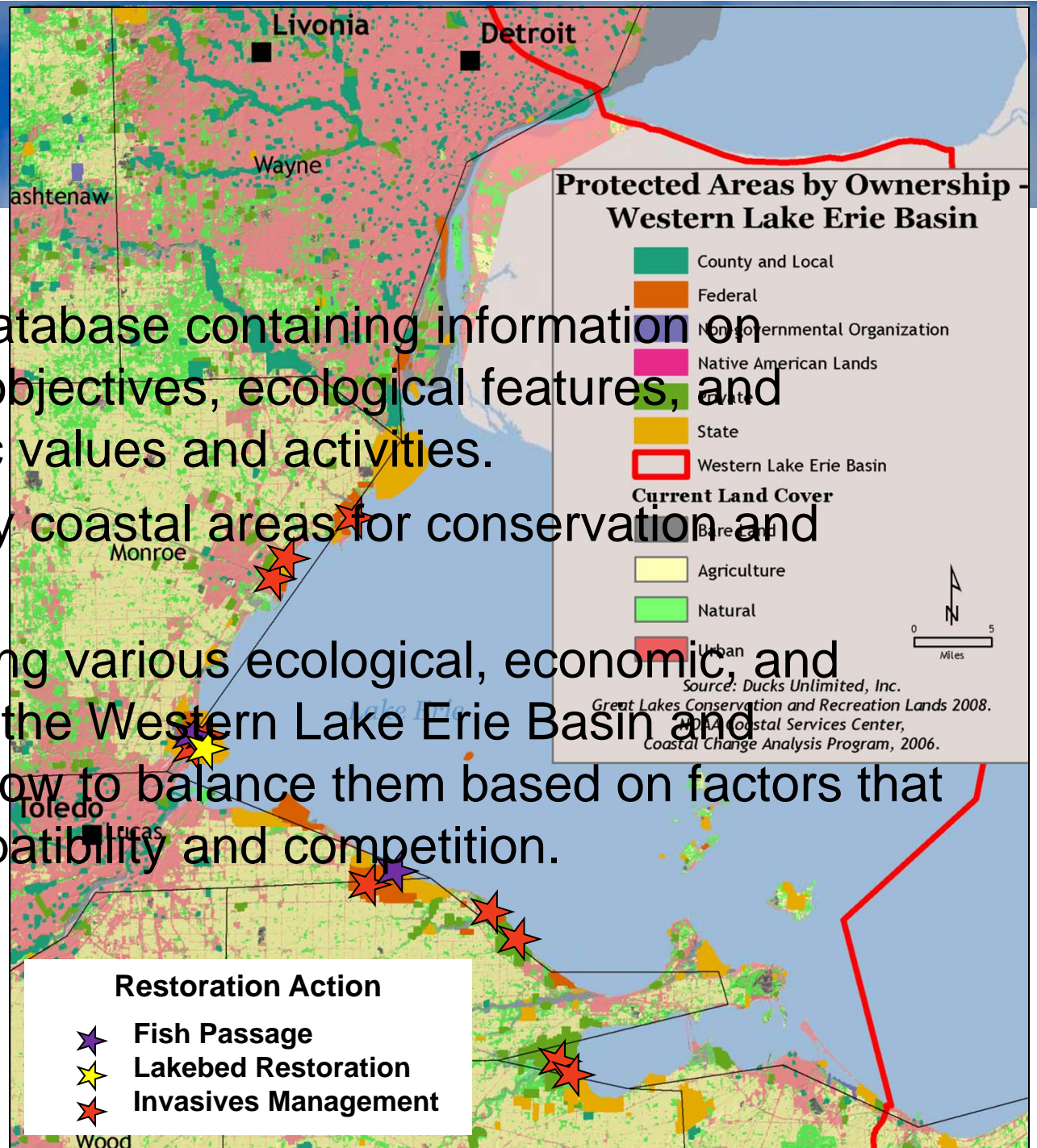


CAP Application at Large Scales

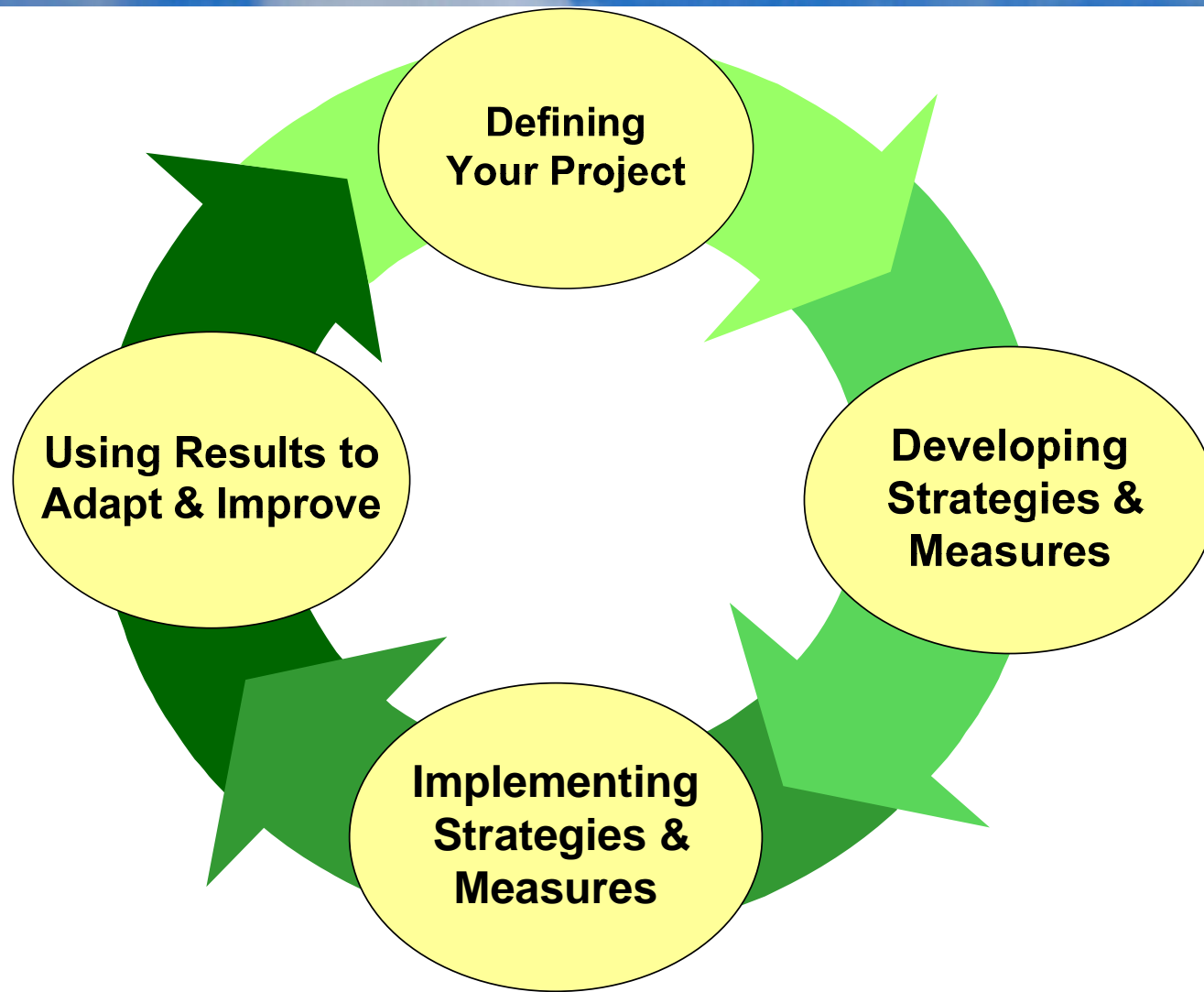
“Three Bays”



- A geospatial database containing information on management objectives, ecological features, and socioeconomic values and activities.
- Maps of priority coastal areas for conservation and restoration.
- A report outlining various ecological, economic, and social goals in the Western Lake Erie Basin and principles for how to balance them based on factors that influence compatibility and competition.



Why Conservation Action Planning ?



To answer common questions and forge shared direction

CAP answers common key questions

What is the biodiversity we care about and what is our best estimate of how it's doing?



Engbretson Underwater Photo



U.S. Fish & Wildlife Service



Engbretson Underwater Photo

Viability Summary					
East Molokai					
Targets		Landscape Context	Condition	Size	Viability Rank
1	North Shore Forests & Cliffs	Fair	Good	Fair	Fair
2	Montane Wet Forest	Fair	Very Good	Fair	Good
3	South Slope Mesic Forest & Shrubland	Poor	Good	Poor	Fair
Overall Biodiversity Health Rank					Fair

CAP answers

common key questions

	Huron – Erie Corridor	Western Basin	Central Basin	Eastern Basin
Invasive aquatics	Very High	High	High	High
Climate: habitat shifting/ alteration	High	High	High	High
Invasive terrestrial	High	High	High	High
Pollution: Ag/forestry	High	High	High	High
Housing/urban development	High	High	Medium	High
Shoreline Alterations	High	High	Medium	High
Contaminated sediments	Medium	Medium	Medium	High
Pollution: industrial	High	Medium	Medium	Medium
Pollution: Urban/household	Medium	Medium	Medium	High



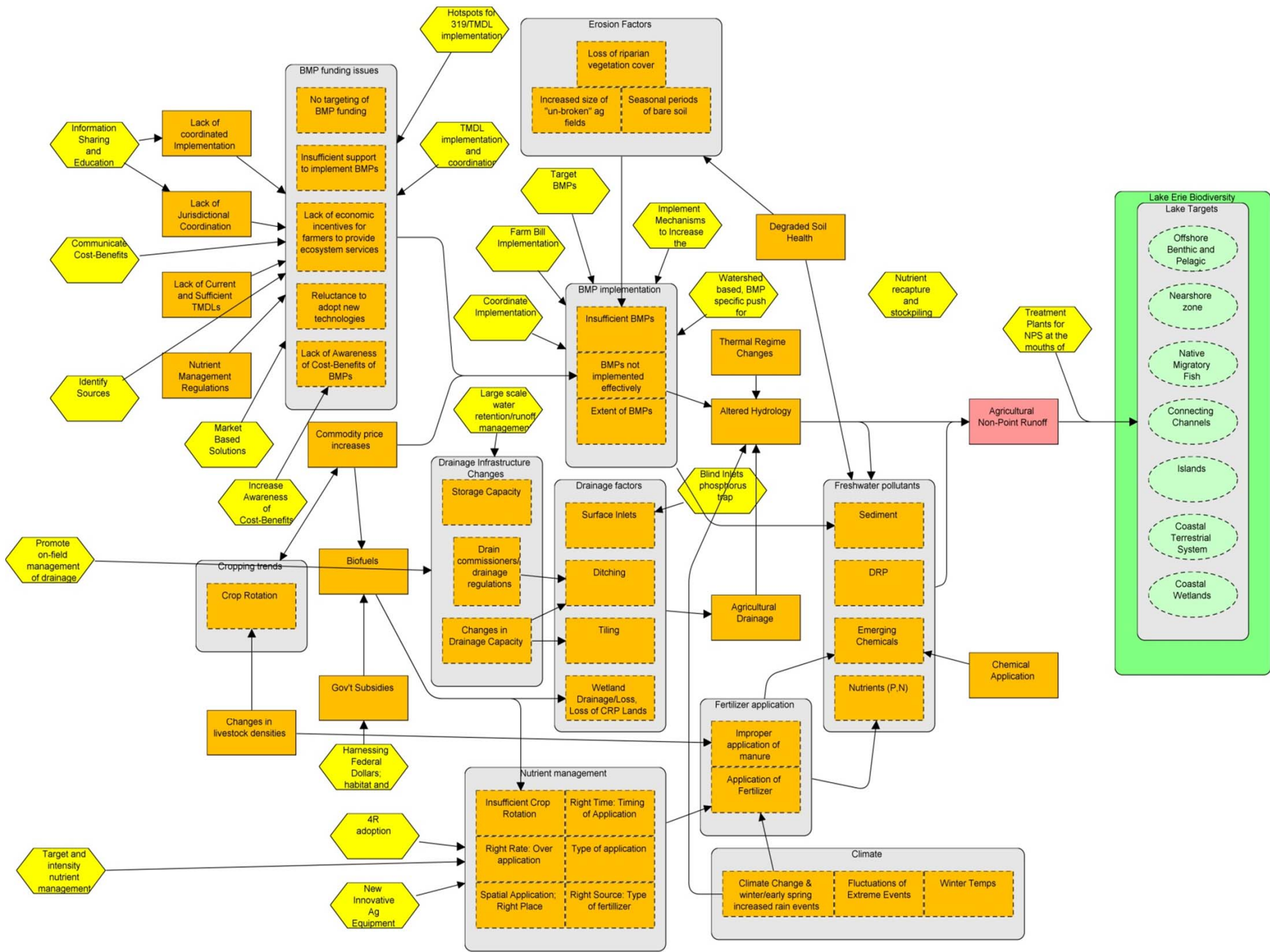
CAP answers common key questions

What **specific** outcomes are we trying to achieve?

Instead of “reduce impacts from phosphorus”



By 20XX, HABs in the Lake Erie nearshore zone are reduced by XX%



CAP answers common key questions.....

What actions are needed to achieve the desired outcomes?

Objective 1: By 2020, reduce the inputs of pollutants from urban and municipal sources by (X%)

Strategic Actions:

- Improve aspects of regulations; in Ontario, Certificate of Approval process for all new urban developments, administered by Ministry of Environment. In the US, MS4 permits provide the vehicle for regulatory approach, and both need to be made more specific and comprehensive
- Implement BMPs in sensitive areas: Identify sensitive areas including recharge areas
- Identify sustainable funding mechanism
- Develop storm water utilities
- Complete analyses of impervious surfaces

CAP answers common key questions.....

How do we know if our actions are working?

Objective 1: By 2020, reduce the inputs of pollutants from urban and municipal sources by (X%)

- Indicator: water quality (could use Dissolved Oxygen in connecting channels or nearshore zone)
- Indicator: pollutant loads; could use sediments (TSS), nutrients (nitrogen or phosphorus), or contaminants (chloride) in the nearshore zone or connecting channels, or as measured in tributaries near the lake

What do we like about CAP?

- **SIMPLE**
- **FLEXIBLE**
- Developed for **CONSERVATION PROJECTS**
- Promotes **FOCUS**
- Helps us prioritize **ACTIONS**
- Promotes **ACCOUNTABILITY**
- Can **COMMUNICATE AND COMPARE**
- **USEFUL SOFTWARE**

Excel Tool

Presque Isle CAPJanuary2009.xls [Compatibility Mode] - Microsoft Excel

File Home Insert Page Layout Formulas Data Review View Add-Ins

Normal Page Layout Page Break Preview Custom Views Full Screen

Workbook Views

Ruler Formula Bar Gridlines Headings

Show

Zoom 100% Zoom to Selection

New Window Arrange All Freeze Panes

Split Hide Unhide

View Side by Side Synchronous Scrolling Reset Window Position

Window

Save Workspace Switch Windows

Macros

A7

The Nature Conservancy Protecting nature. Preserving life.™		Conservation Action Planning Workbook A tool for developing strategies, taking action, and measuring success © 2009 The Nature Conservancy Version: CAP_v6a January 7, 2009		ConserveOnline Help Online Tutorial Full Version
Welcome	Hide / Zoom Worksheets	Workbook Setup (Establecer libro de trabajo) (Organização do Programa) (Установка рабочей книги)	Reset Menus and Tables	Switch to Basic Version

To enter, edit or delete data in protected cells (which are shaded or contain entries in black font), double-click on the cell. An entry form will appear.
To change the table format, double-click on the table header. A table format form will appear.

Project and Conservation Targets	
Project	Presque Isle Shoreline
Target #1	Squaw Bay - Negewegon Shoreline Systems
Target #2	Alpena - Rogers City Shoreline Systems
Target #3	Huron Bay Shoreline Systems
Target #4	Grass Bay - Cheboygan State Park Shoreline Systems
Target #5	Nearshore Systems
Target #6	Thunder Bay River North Branch
Target #7	Karst Systems

Home Viability Σ Viability Stress,Source (1) Σ Threats Strategies Monitoring Σ Stresses Resources Targets Menus

Ready 80%



Adaptive Management Software for Conservation Projects

[Home](#)[About Miradi](#)[Software Features](#)[Open Standards](#)[Download Miradi](#)[FAQs](#)[Contact](#)

Miradi has the potential to transform the practice of conservation.

- Easy Step-by-Step Interview Wizard
- Threat Prioritization
- Development of Objectives and Actions
- Selection of Monitoring Indicators
- Planning and Financial Views



Working Together

The Miradi software program is a joint venture between the Conservation Measures Partnership (CMP) and Benetech.

CMP

The Conservation Measures Partnership

[The Conservation Measures Partnership](#) is a consortium of conservation NGOs committed to improving the practice of conservation.

Benetech

Technology Serving Humanity

[Benetech](#) is an innovative Palo Alto-based nonprofit that develops sustainable technology projects addressing major social issues in areas such as disability, human rights, literacy, education, the environment and the digital divide.

Welcome to Miradi

Miradi - a Swahili word meaning "project" or "goal" - is a user-friendly program that allows nature conservation practitioners to design, manage, monitor, and learn from their projects to more effectively meet their conservation goals. The program guides users through a series of step-by-step interview wizards, based on the [Open Standards for the Practice of Conservation](#). As practitioners go through these steps, Miradi helps them to define their project scope, and design conceptual models and spatial maps of their project site. The software helps teams to prioritize threats, develop objectives and actions, and select monitoring indicators to assess the effectiveness of their strategies. Miradi also supports the development of workplans, budgets, and other tools to help practitioners implement and manage their project. Users can export Miradi project data to donor reports or, in the future, to a central database to share their information with other practitioners.

Miradi News - April 2008

Miradi 2.0 Now Available for Download

We are extremely pleased to announce that Miradi 2.0, our first public version of the software, is now available! Visit www.miradi.org/download to download your own copy of Miradi and start designing, managing, monitoring, and learning from your conservation project using the most up-to-date practices. Read the press release [here](#) (PDF).



Project Name:

ConPro Data Sharing: Within your Organization Only Public (anyone) ?

Primary Project Data Language:

Project Data Effective Date:

Project Filename:

Project Number:

Related Projects:

Project Website:

Project Description:

Project Status:

Next Steps:

More than 20 years in the making!

Sources of Stress
Blue River, Indiana

Sources	Stresses							
	Water Quality	Subsidence	Human Activities	Wildlife	Abandonment of Forest	Wildfire	Dark Spots	Resource Depletion
Industrial Water Pollution	Very High	---	Med	---	---	---	---	---
Residential	---	---	High	Med	---	---	---	---
Family Practice	---	---	Med	---	---	---	---	---
Forest Conversion	---	---	Med	---	---	---	---	---
Light	---	---	Low	---	---	---	---	---
Primary Forest Conversion	---	---	Low	---	Med	Low	High	Low
Clear Skinning	---	---	---	---	---	Very High	---	Low
Recreational Impact	---	---	---	---	Low	---	---	---
Introduction of Exotic Species	---	---	---	---	---	---	---	Med
Overharvesting	---	---	---	---	---	---	---	High
Mining	---	---	Low	---	Med	---	---	---
Residential	---	---	---	---	---	---	---	High
Wildfire	---	---	Low	---	High	---	Low	---
Water Depletion/Quality	---	---	---	---	---	---	---	---

Source: Battaglia
Very High
High
Medium to High
Low

Source: Battaglia Criteria
• Degree of disturbance or "touch" to the area
• Overlap/extent of the source
• Urgency
• Probability of occurrence

The Five-S Framework for Site Conservation



*A Practitioner's Handbook for Site Conservation Planning
and Measuring Conservation Success*



From humble beginnings.....

With Input from 100's of Partners



Fundación Defensores de la Naturaleza
7 Avenida 7-09 Zona 13 Guatemala. PBX 440-8138 email: info@defensores.org.gt



From over 900 projects from six continents

CAP Around the World



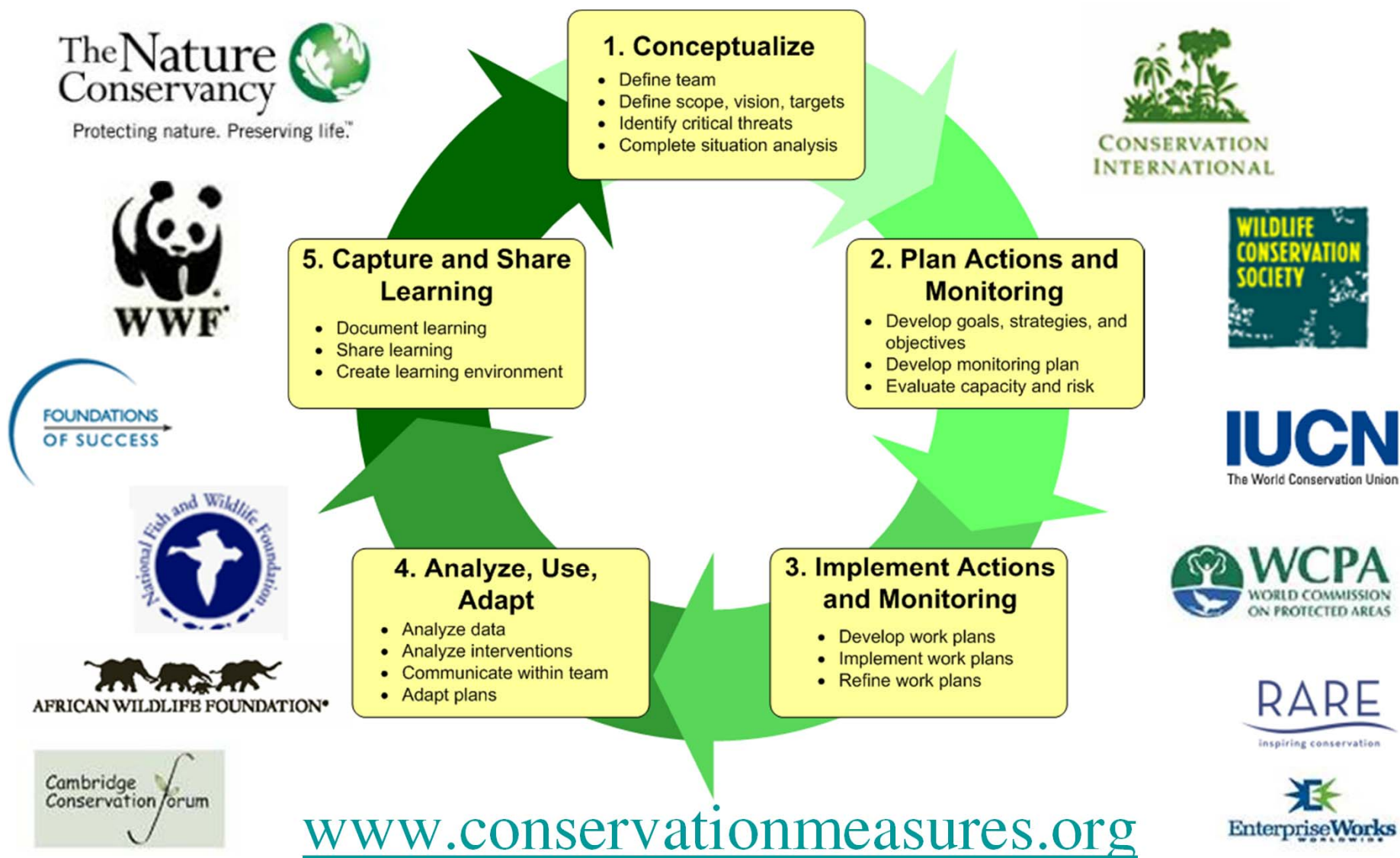
**CAP Coach training Madagascar
National Parks staff**

- Bolivian Government
- Greening Australia
- Thailand – Western Forest Complex
- Pronatura – Mexico
- Gombe Reserve - Jane Goodall Institute
- Guatemala – Tikal, Atitlan National Parks
- Serengeti National Park
- Peru - Machu Piccu
- Kamchatka – Kol River salmon
- BLM – western US, NOAA Salmon Recovery Planning
- And more.....

Some interesting adaptations!

- US State Wildlife Conservation Plans
- Endangered Species Recovery Plans – Bog Turtle, Desert tortoise
- Archeological and cultural target conservation planning in Central and South America
- Participatory conservation planning with indigenous and local community people – Indonesia, Amazon, Texas, Solomon Islands, Northern Territory - Australia

Open Standards for Conservation Practice



www.conservationmeasures.org

The Conservation Coaches Network



Supporting focused conservation practice, sharing and learning worldwide, building capacity for the Future

Core Purpose of Coaches Network



Priority projects have effective action plans
producing results at real places.


Peer Review Workshops



What is this?

Multiple teams working on their CAP side-by-side and providing each other peer review and input

Ground Rules

- Participate
- Don't Dominate
- Tough Love... but 
- “Boss-Free Zone”
- Everyone advocates; project team decides
- Cell phones/e-mail off; no side conversations
- Have Fun

Great conservation at Great Places!

